



CALGRAFIX

1003GB000
PROGRAMVARA CALgrafix



PRODUCT DESCRIPTION

CAL Controls software CALgrafix is for the controller series 3300, 9300, 9400, 9500 and 9500P. This can be used to program the controllers, but also as a freestanding program for general process monitoring. Here follows a brief presentation, contact OEM Automatic, product area Temperature for additional information.

Program control, series 9500P

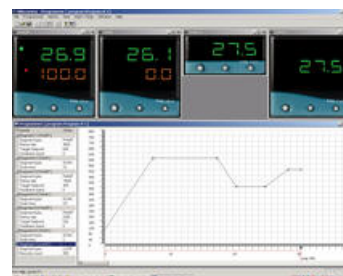
CALgrafix supports the program function in 9500P with very high user-friendliness (ramping, soak time, recipe handling etc.).

Program profiles are created through "click-and-drag" and by doing so creating the required control profile. When this has been done values and times can be adjusted to the required function.

Example of functions

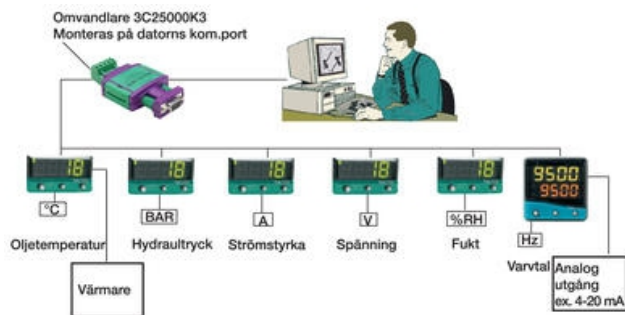
- Click on the selected instrument to change set point values or configuration
- Copy an instrument's settings to another, e.g. when commissioning mould jets with several zones
- Up to 128 instruments can be connected simultaneously
- Save one or more controllers' settings in files (recipe handling)
- Printer function direct on the PC screen
- Logging/screen dump in real time of temperature or other measurement values up to 12 measurement values per diagram
- Storage of measured loggings in log files
- Adjustable scale for measurement values/time, adjustable log frequency
- Configuration, copying of settings
- "Recipe handling" in files
- Logging of selectable parameters as actual/set point values, output power in % alarm indications
- Time controlled logging function
- Simplified programming of ramps/soak times etc. for 9500P and CALogix ("drag and drop")
- List of settings per controller
- OPC compatible, connection in network
- Monitoring of non-CAL clients too (via OPC)
- Audio files (.wav) can be imported for audible alarms
- Interconnection of several networks
- Digital photos (bitmap) can be imported and used as a background
- Logging can be scaled to be able to show different units, e.g. pressure and temperature

Example of displays in CALgrafix



The instrument is mounted on machines or other measurement position at the “factory site” where the machine operator can see process values or set point values and can directly via the buttons set another set point value or another configuration.

CAL's instruments are primarily designed for temperature control, but can also as here be used for measurement, control or monitoring of all applicable process signals where the signal source is 0-20/4-20 mA or 0-10 V. In addition to heating control via contactors or solid state relays there is also an analogue output on 9500P. This can control e.g. a frequency converter to control a speed, a pump or a proportional valve which in turn can control e.g. humidity level, pressure, etc.



Order number	Description
--------------	-------------

	For communication
--	--------------------------

1003GB000	CALgrafix Professional, software for CAL's controllers and other clients/servers, with OPC-server
-----------	---

3C25000K3	Adapter RS232 to RS485
-----------	------------------------